

**INDIAN SCHOOL AL WADI AK KABIR**  
**ENGLISH CORE (301)**  
**CLASS-XII 2025-26**  
**SAMPLE PAPER 01**

**Time Allowed : 3 Hrs.**

**Maximum Marks : 80**

**General Instructions :**

Read the following instructions very carefully and follow them :

- i. This question paper has 13 questions. All questions are compulsory.
  - ii This question paper contains three sections :  
Section A : Reading Skills  
Section B : Creative Writing Skills  
Section C : Literature.
  - iii. Attempt all questions based on specific instructions for each part. Write the correct question number and part thereof in your answer sheet.
  - iv. Separate instructions are given with each question/part, wherever necessary.
  - v. Adhere to the prescribed word limit while answering the questions.
- 

**SECTION A - READING SKILLS**

**22**

**1. Read the following passage.**

**12**

1. The ancient oak tree stood proudly in the center of the village square, its wide branches spreading out like open arms. Its trunk was thick and covered in rough, weathered bark that told tales of time long gone. Over the years, storms and seasons had left their marks, making the tree look even more majestic. In spring, its leaves were fresh and green, but now, with autumn arriving, the leaves had turned shades of gold and red. A few had already fallen, leaving a colorful carpet on the cobblestone path beneath it, gently rustling with the wind.
2. Underneath the oak tree was a stone bench that wrapped around its base, worn smooth by generations of villagers. This bench had become a favorite resting place for the townspeople, who enjoyed the tree's shade during the day. Elderly villagers often gathered there to share stories of the past, while children played nearby. It wasn't uncommon to find travelers sitting there as well, taking a break from their journey. The soft sound of leaves fluttering in the wind added to the calming atmosphere.
3. Surrounding the square were small shops with brightly colored awnings. The scent of freshly baked bread from the nearby bakery often mixed with the smell of the earth and the crisp autumn air. The marketplace was always busy, with people coming to buy local produce and crafts. Villagers walked slowly, greeting one another with smiles, enjoying the warmth of the afternoon sun as they moved through the square. The oak tree, standing tall in the middle, was like a silent guardian, watching over them.

4. As the sun began to set, casting long shadows across the square, the village seemed to slow down. The golden light of the setting sun made the tree appear even grander, with its shadow stretching far across the cobblestones. Families often gathered near the tree in the evening, taking a moment to enjoy the last light of the day. The air was filled with a sense of peace as the day came to a close.
5. For the villagers, the oak tree was more than just a part of the landscape. It was a symbol of strength and continuity. No matter how much the village changed over time, the tree remained a constant. It had witnessed the passing of countless seasons and generations, becoming a part of the village's identity. The tree was a living reminder of the past and a connection to the present, standing firm in the heart of the village.

**Answer the following questions, based on the passage above.**

- i. According to paragraph 1, what do the scars on the oak tree's trunk symbolize? 1
- ii. How does the author describe the role of the stone bench under the oak tree in paragraph 2? 1
- iii. Read and complete the following sentence suitably. 1  
The phrase "a living reminder of the past" in paragraph 5 suggests that the oak tree represents the village's history and connection to its past.  
Choose the correct response from the two options to complete the sentence.  
The oak tree symbolizes \_\_\_\_\_.  
(A) the village's continuity and strength  
(B) the changing seasons and landscape
- iv. Complete the following with ONE reason, with reference to paragraph 3: 1  
The marketplace in the village is important because \_\_\_\_\_.
- v. Why does the writer refer to the oak tree as a "silent guardian" in paragraph 3? 1  
Because  
(A) It has stood for many years, watching over the villagers.  
(B) It protects the village from harsh weather.  
(C) It represents the village's wisdom and strength.  
(D) It provides a central gathering place for the community.
- vi. Provide ONE textual evidence with reference to paragraph 4, to prove the following : 1  
The oak tree creates a peaceful atmosphere in the village square.
- vii. In the line, 'the village seemed to slow down...' (Paragraph 4), what does the phrase 'slow down' suggest about the mood in the evening? 2
- viii. Complete the analogy with ONE word from paragraph 3 : 1  
sunlight: warmth :: oak tree: \_\_\_\_\_  
(A) shade (B) wisdom  
(C) beauty (D) peace

- ix. Why is it fair to say that the statement ‘the oak tree had witnessed the passing of countless seasons’ in paragraph 5, uses figurative language? 1  
(A) It personifies the tree as if it could witness time.  
(B) It compares the tree to a human observer.  
(C) It exaggerates the impact of the tree on the villagers.  
(D) It gives the tree a symbolic meaning in the village.
- x. Assess the potential challenges OR benefits of preserving the oak tree, as suggested in paragraph 5. 2

2. **Read the following carefully.** 10

1. Introduction :

Energy consumption is one of the key factors contributing to global environmental changes, with varying levels of energy usage across countries depending on industrialization, population, and economic activity. This case study explores the energy consumption patterns of different countries and evaluates the sources of energy used, focusing on renewable versus non-renewable energy.

2. Methodology :

Data was gathered from international energy reports tracking the consumption of energy in both developed and developing nations. The data was divided into renewable and non-renewable sources, and the energy consumption trends from 2000 to 2020 were analysed. The study aimed to understand the dependence on non-renewable resources and the global shift toward renewable energy.

3. Survey Examination :

The survey categorized countries based on their energy consumption and the proportion of energy sourced from renewables versus non-renewables. Factors such as government policies, technological advancements, and geographical resources were also examined to identify their impact on a country's energy mix.

4. Results :

The chart below shows the percentage of renewable and non-renewable energy consumption in different regions as of 2020 :

Region	Renewable Energy (%)	Non-Renewable Energy (%)
North America	25%	75%
Europe	40%	60%
Asia	20%	80%
Africa	30%	70%
South America	50%	50%

5. Implications for Interventions :

The data shows that despite global efforts to transition to renewable energy, a significant portion of energy consumption still comes from non-renewable sources, especially in developing regions. Governments must implement stronger policies to promote renewable

energy use through incentives, subsidies, and public awareness campaigns. Technological innovation in renewable energy generation can also play a critical role in reducing dependence on fossil fuels.

6. Conclusion :

The findings of this study emphasize the need for a global shift toward renewable energy to mitigate environmental damage caused by non-renewable energy sources. International cooperation and investments in clean energy technologies are essential to achieving a sustainable energy future for all nations.

**Answer the following questions, based on given passage.**

- i. Complete the following suitably. 1  
In the introduction, the researcher links energy consumption with environmental changes to highlight \_\_\_\_\_.
- ii. What would the following be classified as? 1  
To analyse the global patterns of energy consumption and the shift towards renewable sources.  
Select the appropriate response.  
(A) Secondary objective (B) Method of analysis  
(C) Primary objective (D) Research outcome
- iii. Give two points to support why renewable energy was included as a focus in the study on global energy consumption. 2
- iv. Paragraph 3 includes words – ‘technological advancements’ and ‘policies.’ 1  
Classify the following sentences as ‘technological advancement’ or ‘policy’:  
Sentence 1: The development of solar and wind energy systems helps countries reduce their reliance on fossil fuels.  
Sentence 2: Government subsidies encourage businesses to invest in renewable energy.
- v. Read the following : 1  
Liam lives in Europe, where renewable energy accounts for 40% of total energy consumption. His friend Suresh, who resides in Asia, primarily uses non-renewable energy, which makes up 80% of the total. Meanwhile, Carlos in South America benefits from an equal split between renewable and non-renewable sources.  
Select the option that identifies the correct regional energy consumption for Liam, Suresh, and Carlos.  
(A) Liam – North America; Suresh – Africa; Carlos – Europe  
(B) Liam – Europe; Suresh – Asia; Carlos – South America  
(C) Liam – South America; Suresh – Asia; Carlos – North America  
(D) Liam – Asia; Suresh – Europe; Carlos – Africa
- vi. Although Europe and South America both use a significant portion of renewable energy, why does South America have a higher percentage of renewables? 1

- vii.** Analyse how targeted policies and technological advancements can help increase the use of renewable energy in regions like Asia and Africa. (Paragraph 5) 2
- viii.** What is the ultimate goal for stakeholders, based on the insights from the study? 1
- (A) To increase the global use of non-renewable energy
  - (B) To promote energy consumption regardless of the source
  - (C) To achieve a global shift toward renewable energy
  - (D) To limit the use of renewable energy only to developed countries

**SECTION B - CREATIVE WRITING SKILLS****18**

*All the names and addresses used in the questions are fictitious. Resemblance, if any, is purely coincidental.*

- 3. Attempt ANY ONE of the two, (A) or (B), in about 50 words. 1 # 4 = 4**

- A.** Your school is organising a Bal Mela on 'Children's Day' in the school. The primary wing of the school is going to put up various stalls in the mela. Draft a notice giving details of the mela as well as inviting the senior students to attend the same. Sign your name as Rajesh Roshan, Secretary, Cultural Society.

**OR**

- B.** As the librarian of your school, write a notice in about 50 words informing the students of the penalty for losing or damaging the books issued to them.

- 4. Attempt ANY ONE of the two, (A) or (B), in about 50 words. 1 # 4 = 4**

- A.** You are going to open a confectionery store at Sipri Road, Jhansi, and want to invite your friends and the people of your locality on its inaugural ceremony. Draft a suitable invitation in 50 words.

**OR**

- B.** You are Anita/Rajnish. You have been invited to attend the wedding of your friend's sister during summer vacation. Respond to the invitation accepting the invitation.

- 5. Attempt ANY ONE of the two, (A) or (B), in 120-150 words. 1 # 5 = 5**

- A.** Meera Ranjan is a resident of Kerala. She writes a letter to the editor of a local newspaper giving her strong views on the disadvantages of setting up a chemical factory in your area and makes an appeal to the central government to reconsider its decision, as it will worsen the environment of the city. Add your own ideas and write this letter in 120-150 words.

**OR**

- B.** You saw an advertisement in a daily newspaper for the post of a Sales Executive in a reputable MNC. Write a letter with bio-data in 120-150 words to the HR Manager, Goel Sons Ltd, Vinod Nagar, Delhi, applying for the post advertised. You are Rani/Rajesh.

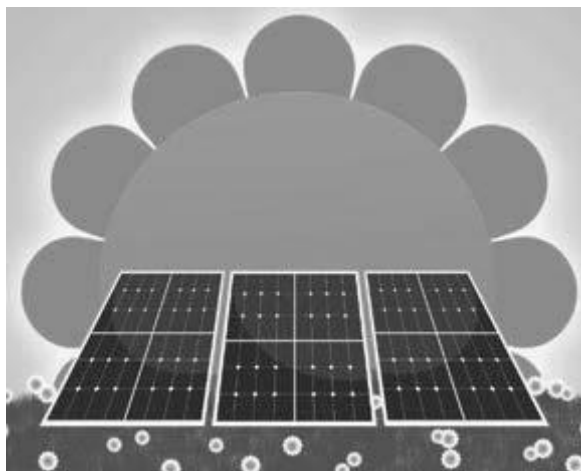
6. Attempt ANY ONE of the two, (A) or (B) in 120-150 words.

1 # 5 = 5

- A. Mohit Sen, the president of the youth forum of his colony, attends a seminar on rampant corruption in social and political life in India. He decides to write an article on the 'Role of Youth in Combating Corruption'. Write his article in 120-150 words.

OR

- B. You are a TOI correspondent. Write a report in 120-150 words on the 'use of solar energy' for your newspaper.



### SECTION C- LITERATURE

40

7. Read the following extracts and solve ANY ONE of the given two, (A) or (B).

1 # 6 = 6

- A. A thing of beauty is a joy forever  
Its loveliness increases, it will never  
Pass into nothingness, but  
A bower quiet for us, and a sleep  
Full of sweet dreams, and health and quiet  
Breathing.  
Therefore on every morrow are we wreathing  
A flowery band to bind us to the earth:  
Spite of despondence of the inhuman dearth  
Of noble natures of the gloomy days  
Of all the unhealthy and over darkened ways  
Made for our searching.

- i. Which of the following themes is best represented in the given extract?
- (A) Keats defines beauty as illusionary.  
(B) Keats defines beauty as eternal.  
(C) Keats defines beauty as transient.  
(D) Keats defines beauty as short-lived.
- ii. Read the assertion and the reason below, with reference to the given extract.  
**Assertion :** The poet believes that beauty provides eternal joy and helps us stay connected to life.  
**Reason :** Beauty exists despite the challenges of life, but it cannot ease the despondence or gloom completely.  
Choose the correct option regarding their relationship:
- (A) Both the assertion and the reason are true, and the reason is the correct explanation of the assertion.  
(B) Both the assertion and the reason are true, but the reason is not the correct explanation of the assertion.  
(C) The assertion is true, but the reason is false.  
(D) The assertion is false, but the reason is true.
- iii. Complete the following suitably.  
'will keep a bower quiet for us' means \_\_\_\_\_.
- iv. Select the correct option from those given in brackets, to fill in the blank.  
The things that create \_\_\_\_\_ (unhappiness/happiness) are lack of noble nature.
- v. Based on the rhyming scheme of the poem, evident in lines 2-10, of the given extract, which word would rhyme with line 1?

time

clock

clever

- vi. What does the poet say about the nature of beauty in the given lines?

**OR**

- B. 'Aunt Jennifer's fingers fluttering through her wool  
Find even the ivory needle hard to pull.  
The massive weight of Uncle's wedding band  
Sits heavily upon Aunt Jennifer's hand.'

(Aunt Jennifer's Tigers)

- i. Why does Aunt Jennifer find the needle hard to pull?
- ii. What does Aunt Jennifer want to express through the creation of the tigers?

- iii. What is the 'massive weight' a subtle reference to?
- (A) Unwanted marriage
  - (B) The ring that makes her uncomfortable
  - (C) Her gold ring
  - (D) Suppression at the hands of her husband
- iv. Read the assertion and the reason below, with reference to the given extract.
- Assertion :** Aunt Jennifer's struggles in life are symbolized by her difficulty in pulling the needle.
- Reason :** The weight of Uncle's wedding band represents the oppressive burden of her marriage, which restricts her freedom and independence.
- Choose the correct option regarding their relationship:
- (A) Both the assertion and the reason are true, and the reason is the correct explanation of the assertion.
  - (B) Both the assertion and the reason are true, but the reason is not the correct explanation of the assertion.
  - (C) The assertion is true, but the reason is false.
  - (D) The assertion is false, but the reason is true.
- v. Select the correct option from those given in brackets, to fill in the blank.
- The ring around Aunt Jennifer's fingers indicate her \_\_\_\_\_ (status/marriage).
- vi. Complete the following suitably.
- The fluttering fingers indicate the suppression and subjugation that \_\_\_\_\_.
8. **Read the following extracts and solve ANY ONE of the given two, (A) or (B). 4 # 1 = 4**
- A. "If we sheltered a white man in our house we should be arrested and if we turned him over as a prisoner, he would certainly die," Sadao said.
- "The kindest thing would be to put him back into the sea," Hana said. But neither of them moved. They were staring with a curious repulsion upon the inert figure 'What is he?' Hana whispered.
- "There is something about him that looks American," Sadao said. He took up the battered cap. Yes, there, almost gone, was the faint lettering. 'A sailor,' he said, "from an American warship." He spelled it out: 'US Navy.' The man was a prisoner of war!
- (The Enemy)*
- i. Why did Hana suggest putting the man back into the sea?
- ii. What conflicting ideas disturb the doctor's mind when they saw the bleeding American soldier?
- (A) Patient's health and servants
  - (B) Duty of a doctor and the case of defamation
  - (C) Duty of a doctor and loyalty towards his nation
  - (D) Servant's behaviour
- iii. Why does Hana say 'The kindest thing would be to put him back into the sea' ?



- iv. In what condition did Dr. Sadao find the American soldier at the seashore?

**OR**

- B. The Maharaja's anxiety reached a fever pitch when there remained just one tiger to achieve his tally of a hundred. He had this one thought during the day and the same dream at night. By this time the tiger farms had run dry even in his father-in-law's kingdom. It became impossible to locate tigers anywhere. Yet only one more was needed. If he could kill just that one single beast, the Maharaja would have no fears left. He could give up tiger hunting altogether.

*(The Tiger King)*

- i. Complete the sentence appropriately.  
The writer refers to the dreams of the Tiger King to highlight \_\_\_\_\_.
- ii. What does NOT lead to a 'fever pitch'?
- iii. Select the most suitable title for the given extract.  
(A) The Selfish King  
(B) On the Way of Killing a Hundred Tigers  
(C) Maharaja's Determination  
(D) Killing Other Creatures
- iv. 'By this time the tiger farms had run dry even in his father-in-law's kingdom.'  
What does this line tell us about the Maharaja?

**9. Read the following extracts and solve ANY ONE of the given two, (A) or (B). 1 # 6 = 6**

- A. And in dark hutments, next to lines of flames of flickering oil lamps, sit boys and girls with their fathers and mothers, welding pieces of coloured glass into circles of bangles. Their eyes are more adjusted to the dark than to the light outside. That is why they often end up losing their eyesight before they become adults.

Savita, a young girl in a drab pink dress, sits alongside an elderly woman, soldering pieces of glass. As her hands move mechanically like the tongs of a machine, I wonder if she knows the sanctity of the bangles she helps make. It symbolizes an Indian woman's suhaag, auspiciousness in marriage. It will dawn on her suddenly one day when her head is draped with a red veil, her hands dyed red with henna, and red bangles rolled onto her wrists. She will then become a bride.

*(Lost Spring)*

- i. List any two details about the boys and girls of bangle making industries.
- ii. What does bangle symbolise?  
(A) Indian woman's suhaag  
(B) Auspiciousness in marriage  
(C) Both (A) and (B)  
(D) The tyranny of women
- iii. Complete the sentence appropriately.  
Savita sits alongside an elderly woman \_\_\_\_\_.

- iv. Pick evidence from the extract that helps one infer that Sabita, a young girl is also engaged in ancestral profession.
- v. What does 'their eyes' over here refer to?
- vi. Which of the following headlines best suggests the central idea of the extract?
  - (A) The rigidity of bangle makers
  - (B) The importance of bangle makers
  - (C) The fears of bangle makers
  - (D) The miserable condition of bangle makers

**OR**

- B. "Even in the matter of education, especially formal education, Subbu couldn't have had an appreciable lead over the boy. But by virtue of being born a Brahmin-a virtue indeed!-he must have had exposure to more affluent situations and people."

*(Poets and Pancakes)*

- i. If Subbu was not educated, what made him superior to the office boy?
- ii. Why was office boy always angry with Subbu?
  - (A) Office boy was at par with Subbu in education.
  - (B) Subbu had insulted the office boy.
  - (C) Subbu had attained No. 2 position.
  - (D) Thought Subbu to be very clever
- iii. What do you think is the office boy feeling in the extract?
- iv. Rationalise to support the given opinion.  
According to the office boy being a Brahmin is a virtue.
- v. On the basis of the extract, choose the correct statement.
  - (A) Subbu was the chief make-up man.
  - (B) The narrator agrees with the office boy.
  - (C) The office boy seems to be jealous of Subbu.
  - (D) All of the above
- vi. Complete the sentence appropriately.  
The narrator and the office boy highlight \_\_\_\_\_.

10. Answer ANY FIVE of the following six questions in 40-50 words each : 5 # 2 = 10

- i. Is the title of the story 'The Rattrap' justified?
- ii. Describe the symbols that have been used to relate the beauties of nature.

*(A Thing of Beauty)*

- iii. What symbol does the poet invoke in 'Keeping Quiet' to convey the idea of life under apparent stillness?
- iv. What did M. Hamel tell his students about French language? What was his suggestion to them.

*(The Last Lesson)*

- v. What are the hazards of working in the bangle-making industry?

*(Lost Spring)*

- vi. What was Kamala Das' fear as a child? Why does it surface when she is going to airport?

*(My Mother at Sixty-Six)*

**11. Answer ANY TWO of the following three questions in 40-50 words each : 2 # 2 = 4**

- i. What happened to the narrator's psychiatrist friend Sam Weiner? What do you deduce from it?

*(The Third Level)*

- ii. What qualities of Mr. Lamb drew Derry toward him?

*(On the Face of It)*

- iii. When did the author start her journey to Antarctica and what had she to pass through?

*(Journey to the end of the earth)*

**12. Answer ANY ONE of the following two questions, in about 120-150 words. 1 # 5 = 5**

- A. Sophie lives in her fantasies. She hopes to make it big. You realize that the modern day youth are also like that. You decide to write an article about the need to dream and how can it prove to be harmful sometimes.

*(Going Places)*

**OR**

- B. Imagine a child from the farmer's family migrates to the city for their education. As the child, write back to your family telling them whether you would or would not want to turn into a city person.

Use the context of the poem "A Roadside Stand" in mind to pen down this letter.

You may begin this way :

12, Davidson County

23 January xx

Dear mom

I have been thinking about the roadside stall lately. Now that I find myself surrounded by city-people all the time, I think.....

With love

Jennifer

13. Answer ANY ONE of the following two questions, in about 120-150 words. 1 # 5 = 5

- A. Recall the story 'We too are Human Beings' from the text 'Memories of Childhood'. Imagine that Bama stops the elderly man who was carrying the packet of vadais, and strikes up a conversation with him. She asks him a couple of questions. As the man, responds to Bama's questions. You may follow the given format and include the two questions in your conversation.

Bama : Hi sir, I noticed that you were carrying that packet in a funny manner. Why were you doing so?

Elderly man : ...

Bama : But that's terrible. How does that make you feel?

OR

- B. Mr. Lamb had many qualities that attract Derry. Mr. Lamb has positive attitude towards life. His qualities attracted Derry towards him. What are the qualities of Mr. Lamb that drew Derry towards him? You wish to include a cameo for the above statement's explanation in your upcoming blog post.

(A short description that neatly encapsulates someone or something)

As a part of the research, discuss the statement in relation to qualities of Mr. Lamb in about 120-150 words.

*(On the Face of It)*

□□□□□□

FOR ANSWERS REF TO :

<https://drive.google.com/file/d/1GXSqRQYGnlLOJfUyqeBRXZY-BNSdGZEv/view?usp=sharing>